

## Plenary session Grenoble Aurora Biannual, May 28<sup>th</sup> 2019

In Antwerp, Aurora started its series of plenary sessions on a related cluster of SDGs with a session on the Biosphere related SDGs.

The table below represents the clustering of SDGs for the Aurora Biannual Plenary sessions. It builds on the clustering designed by the Stockholm Resilience Centre, but groups of more equal size.



Biosphere	Society	Economy	Health	Institutions
6. Clearwater and sanitation	1. No poverty	8. Decent work and economic growth	2. Zero hunger	16. Peace, justice & strong institutions
13. Climate action	4. Quality education	9. Industry, innovation & infrastructure	3. Good health & well being	17. Partnerships for the goals
14. Life below water	5. Gender Equality	10. Reduced inequalities		
15. Life on land	7. Affordable and clean energy	12. Responsible consumption & production		
	11. Sustainable cities & communities			

It may be noted that the European Commission, in its effort to create a stronger alignment between its “challenges” approach and the SDGs, now works with a total of six clusters (the cluster “inclusive and secure society has been split (see: <https://www.ssh-impact.eu/horizon-europe/>).

**Pillar 2**  
Global Challenges and Industrial Competitiveness

**Clusters**

- Health
- Inclusive and Secure Society
- Digital and Industry
- Climate, Energy and Mobility
- Food and natural resources

Based on analysis of the clusters using the SDG bibliometrics for relevance tool and additional considerations, the Aurora Board has chosen to focus on the Health-related SDGs at the plenary session in the Grenoble Aurora Biannual.

**NB** The tool is still in development and in need for further improvement of the search query methodology, so these results should be used with caution.





For the discussion of the Health-related SDGs and Aurora, it is proposed to follow the same format as used for the SDG plenary in Antwerp:

1. Introduction by the moderators (5 minutes)
  - a quick reminder of what the SDGs are and of the SDG-discussion at the Duisburg-Essen Aurora Biannual
  - outline of the set-up and desired outcome of the SDG-part of the plenary
2. A short (8 minutes) bibliometric analysis by Maurice Vanderfeesten, zooming in on the Health-related SDGs, using the Aurora SDG bibliometric analysis with data for all nine Aurora universities
3. Three Aurora academics who (5 minutes each) are leading in a Health-SDG will:
  - o Identify (where possible) an opportunity/potential for intra-Aurora academic cooperation in their field.
  - o Present an idea of how research in Health & Wellbeing can be connected with “Social Entrepreneurship & Innovation” as a need of society and a charge to universities.
4. A moderated session with Aurora presidents, students and other participants, focusing on the following questions:

- How can/will you facilitate SDG-related academic cooperation within Aurora of which the four leading academics gave examples?
- Please respond to the ideas to connect Health & Wellbeing research to Social Entrepreneurship & Innovation, in the context of your university's strategy.
- To what extent is "Health & Wellbeing" atypical for university research, having been problem-focused more than discipline-focused from the start?
- To what extent is the need to be multidisciplinary, interdisciplinary, transdisciplinary in research greater or smaller than average in "Health & Wellbeing"? Is your university organisation and culture adequate for this?

This part of the session, in particular needs careful and diligent moderation. A pair of one experienced and one fresh young moderator worked well in Norwich, Essen and Antwerp; so we should stick to that format.

Composition of the Plenary team

Panelists:

1. Rémy Slama
2. Lia van Wesenbeeck
3. Kristy Sanderson

Moderators:

1. Hélène Revil
2. Kees Kouwenaar

## Short Bio's

### On the panelists

#### **Rémy Slama, environmental epidemiologist at Université Grenoble Alpes**



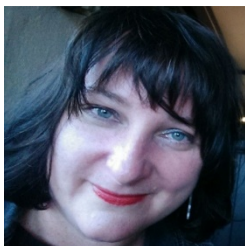
Rémy Slama is a researcher in Environmental Epidemiology. He is a senior investigator at Inserm, affiliated to IAB, a joint research center from Inserm, CNRS and University Grenoble Alpes located in Grenoble (France), where he leads the Team of Environmental Epidemiology and the Department of Prevention and Treatment of Chronic Diseases. Rémy's main research topics include the Influence of Environmental factors, including the exposome on human health; the methodological issues in environmental and reproductive epidemiology; the management of environmental risks. He is currently working on projects in relation to the Mobility and improvement of air quality, Endocrine disruptors, gut microbiota and neurodevelopment and Environmentally-induced Developmental Origins of Health and Disease.

#### **Lia van Wesenbeeck, Director ACWFS, Vrije Universiteit Amsterdam**

Lia van Wesenbeeck is Director of the Amsterdam Centre for World Food Studies at the Vrije Universiteit, Amsterdam (ACWFS). Her research interests include general equilibrium theory and applications, in particular focusing on the inclusion of biophysical characteristics and spatially explicit models of production, transport and natural flows. In addition, she has extensive experience in spatially explicit statistical analysis of survey and map data, and profiling of vulnerable groups. She has wide experience in international research consortia, and serves on various national and international boards and advisory committees. Among others, she has been chair of the International Advisory Committee 'Food and Business Global Challenges Programme' of the National Science Foundation in the Netherlands (2013-2017), and member of the Round Table on Monitoring Food Security (CFS).



### **Kristy Sanderson, Chair in Applied Health Research, University of East Anglia**



Kristy Sanderson joined UEA in January 2017 as Chair in Applied Health Research in the School of Health Sciences. She is a psychiatric epidemiologist and has been a registered psychologist earlier in her career. Her approach is highly collaborative, multi-disciplinary and multi-method. She has supervised and collaborated across the health and social sciences including medical specialties, public health, nursing, psychology, business, economics, and sociology. Kristy is interested in all aspects of mental health and wellbeing from a public health and population health perspective, with a focus on the health and wellbeing of workforces. Her current research is exploring issues around staff wellbeing and patient and organisational outcomes within the NHS, and how to best prepare our future health workforce.

### On the moderators

### **Héléna Revil, researcher in Social Sciences at Université Grenoble Alpes**

Héléna Revil is a researcher in Social Sciences at the PACTE research centre, which is a mixed research unit specializing in the social sciences and part of the Grenoble-Alpes University Community. She is also a research manager for the Observatory on Non-Take Up (NTU) of Social Rights and Public Services. Héléna's research is looking into the non-take up of social rights and public services, particularly in terms of health and health insurance, on the construction of public issues and the effects of new issues being put on the agenda on public action. She has defended a thesis called "Non-take up of Universal Health Coverage. Emergence of a category of action and organisational changes". She has also written "Universal Health Coverage : who is taking advantage of it ?" in the publication from the ODENORE titled "The other side of social fraud. The scandal of non take-up of social rights", published in 2012. She currently teaches social and health policies at Sciences-Po Grenoble (the institutes of political sciences) and UGA .



### **Kees Kouwenaar, Secretary General Aurora Universities Network**

Kees Kouwenaar is senior advisor international strategy at the Vrije Universiteit Amsterdam, where he also was director of of the Centre for International Cooperation. He was responsible for a new comprehensive internationalisation strategy and a reorganised comprehensive VU International office.



From September 2014 to September 2017 he was leading coordinating the Mastermind Europe project (supported under ERASMUS+ as a KA2 strategic partnership).

Before 2008, he director of the Center for International Legal Cooperation and group director at Nuffic for Higher Education internationalisation and for Credential Evaluation. He was lead expert, workshop chair and final rapporteur for the Lisbon Recognition Convention of 1997. He served as chairman of the NARIC network and EAIE's professional section for admission & credential evaluation. Kees has presented and chaired at numerous conferences in Europe, North

America, Africa and Asia.

Since 2013, he edits the biweekly digital VU International News & Reviews.

Currently, his main task is the coordination of the Aurora network of societally engaged research universities, set up by the Vrije Universiteit Amsterdam and the University of East Anglia.